



**Okie-Tex  
Star Party**

www.Okie-Tex.com

**The Oklahoma City Astronomy Club is pleased to invite you to the 38th Annual Okie-Tex Star Party!**

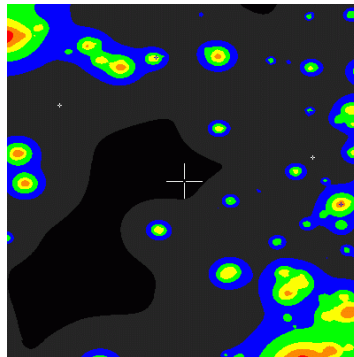
What started as a weekend retreat for members of the Oklahoma City Astronomy Club has grown into one of the TOP TEN star parties in the country. So Join us in October of 2021 for the 38th Annual Okie-Tex Star Party!

The star party will again be held at Camp Billy Joe near Kenton Oklahoma and Black Mesa and offers some of the darkest skies anywhere in the southwestern United States.



*"Is that the Milky Way or clouds I see?"*

Here's the light pollution map for our location and, as you can see, it just doesn't get much darker than this!



With an approximate Bortle scale of 1, it's not at all uncommon for the Milky Way to cast visible shadows and Gegenschein and Zodiacal Light are routinely visible at the site.

*That's DARK and THAT DARK IS NICE! So come out and see for yourself!*



PO Box 22804  
Oklahoma City, OK 73123-1804



## 38th Annual Okie-Tex Star Party October 1 - October 9, 2021 Camp Billy Joe, Kenton, Oklahoma

### Other Attractions

**Kenton**—This tiny town of 17 people is the only community in Oklahoma on Mountain Standard Time.

**"The Merc"**—Visitors to Kenton will find the Kenton Mercantile which serves as a deli, general store, post office and general place to stop in and gab a while for the community and star party guests. **"The Merc"** is currently closed.

**Kenton Museum**—Just down the street is the Kenton Museum offering some insight into Kenton and the surrounding area's past. The museum sports a great collection of artifacts from the pioneer days of the region.

**Capulin Volcano National Monument**—Just across the New Mexico border and a way is Capulin Volcano, a nearly perfectly-shaped cinder cone rising more than 1,200 feet above the surrounding high desert.



The volcano is long extinct and today, the forested slopes provide habitat for mule deer, wild turkey, black bear

and other wildlife. Abundant displays of wild flowers bloom on the mountain each summer.

A 20 mile road spiraling up to the crater rim makes Capulin one of the most accessible volcanoes in the world. Trails around the rim and to the crater bottom offer a rare opportunity to easily explore a volcano.

**The Cimarron Heritage Center**—In Boise City was formed in 1994 with the mission to preserve and interpret the natural, historic and artistic heritage of Cimarron County and the area and to assume responsibility for the collections which are held in trust for all citizens and visitors to this region. The center provides a look back into the past to pioneer days on the Santa Fe Trail and other interesting artifacts of Cimarron County.

**Black Mesa**—At 4,973 feet above sea level, Black Mesa is the highest point in Oklahoma. The mesa and surrounding area provide some of the most dramatic landscapes in Oklahoma appealing to many interests. Geology and paleontology buffs will find a rich landscape including dinosaur fossils and tracks in



nearby Dinosaur Quarry which was excavated in the 1930's.

Interesting rock formations dot the area including "Old Maid's Profile" and the "Wedding Party" complete

with bride, groom and a minister. Numerous Indian writings and drawings from prehistoric times can be seen on the rocky walls of many canyons throughout the area.

Black Mesa is named for the thick layer of black rock which caps the mesa. This rock was formed by a lava flow that covered the region about 30 million years ago. The flow is about 45 miles long and extends from Colorado.

**Black Mesa State Park**—Black Mesa State Park is adjacent to Lake Carl Eting and offers RV, tent and equestrian campsites, picnic

facilities, boat ramps and a mooring buoy, trout fishing in season, a playground, restrooms with showers and a group camp with bunkhouses. The



park also encompasses Black Mesa itself which is a nature preserve.



The Pleiades (M45) imaged during Okie-Tex 2004

*Your Invitation to Okie-Tex Star Party 2021 Has Arrived!*

## Registration Information

### Okie-Tex Pre-Registration

The pre-registration fee is \$75.00 for each primary registrant and for each additional family member 16 years old and older. Children 15 years old and younger are admitted free of charge. Pre-registration submissions must be post-marked no later than Saturday, September 11, 2021 and must be paid in full. Online Registrations must be completed and paid in full by midnight CDT on Sunday September 12, 2021.

### At-The-Door Registration

Registrations received with postmarks after September 11, 2021 and registrations at the door are \$150.00 for all adult guests 16 years old and older.

### Facility Fee

As part of our ongoing investment in and improvements to Camp Billy Joe, a \$5.00 per day facility fee is charged for all registrants. The facility fee is waived for children 15 years old and younger.

### Meals

In camp meals provided by Jody's Catering may be purchased. Please refer to the enclosed Meal Request Form. Checks for meals are made payable to Jody's Catering. *Meals must be purchased in advance to be guaranteed food. Number of meals purchased onsite will be limited. Meal request forms must be postmarked no later the September 12, 2021.*

### Groups

School groups, must contact the Registrar for group rates registrar@okie-tex.com. Groups interested in attending the star party or visiting for an evening of observing must contact the Registrar for a group reservation and must provide a signed liability release.

### Refund Policy

Refund requests will be honored only if notification is received on or before September 12, 2021 and must be requested in writing, or email. Refunds will be processed after November 1, 2021.

### Check-In At The Star Party

All guests should check in at the vendor hall at their earliest convenience after arrival. The registration desk will be staffed from 11:30am-12:30pm and 5pm-5:30pm on Sunday through Saturday during the week of the party. **Do not arrive before Friday, October 1, 2021 !!!!**

### Confirmation

Registrants receive confirmation upon receipt of their registration forms and payment by the who's coming list. If payment is not complete, your name will not show on the list. Please e-mail the Registrar concerning all registration inquiries. registrar@okie-tex.com

## Other Accommodations In the Area

*Black Mesa Bed & Breakfast*—Monty Joe and Vicki Roberts serve as your hosts. Accommodations include a ground level double occupancy room and a second story suite that sleeps 8. 800-866-3009 or 580-261-7443. e-mail: bmbbl@juno.com

*The Hitching Post*—Bob & Jane Apple. These lodgings consist of very clean and comfortable trailer homes and a log cabin. Each unit is fully furnished including the kitchen. The Bed and Breakfast has two separate bedrooms and one bathroom. 580-261-7413.

*The Hoot Owl Ranch has 2 newly completed cabins with a queen bed in each, full bath and kitchenette, They also serve dinner on Friday and Saturday nights, reservations are needed. 580-261-7789*

*Walker Ranch - Cerita Walker has a 4 bedroom home 3 miles west of Kenton. 580-261-7439 www.mesavalleyguesthouse.com*

*Kenton Mercantile Kabins - is currently closed*

*Longhorn Motel - 580-544-2596*

*Townsmen Motel - 580-544-2506*

Black Mesa State Park - abundance of full hook-ups and not crowded.

Great Plains Bunkhouse - 580-426-2343 or 806-339-1359 www.okbunkhouse.com

*Boise City* - This city serves as an anchor for a trip through Oklahoma's Panhandle. With restaurants, hotels, RV camping and shopping.

### Contact Us:

PO Box 22804  
Oklahoma City, OK 73123  
www.okie-tex.com  
starpartyinfo@okie-tex.com



## Okie-Tex Star Party Etiquette

Thank you for observing the following courtesies during the party:

### Gate Closings/Lighting Restrictions

Dark out period will begin Sunday night and continue each night through Friday night. At 9:00 PM each evening, the gate will be closed and lighting restrictions will begin. This is for the safety of star party participants and to prevent unwanted light in the observing area.

No vehicles will be permitted to travel into or out of the star party site after the gate is closed except for emergency situations.

No one will be allowed to travel within the star party site after the lighting restrictions begin. So if you plan to leave during the night, please park outside the gate before it closes and face your vehicle away from the observing field! The gate will be reopened at sunrise each morning.

All light emitting devices must be turned off when lighting restrictions begin. The only exceptions to this rule will be red-filtered lights and during inclement weather or emergencies. Emergencies may require the use of white light and whenever possible, a warning should be given to avoid interference with astrophotography or observing.

If you are using a personal computer on the observing field for the operation of your telescope or CCD the screen must be red-filtered. If your RV is near the observing field please cover the windows with dark material.

Please disable, and/or put car remotes in safe places so that flashing vehicle lights are not accidentally turned on.

### Electricity/Generator Use

The following guidelines for electricity/generator use are in effect for the duration of the star party:

Only telescope drive equipment, antidew gear, drive correctors, personal computers necessary to the operation of telescopes or CCD equipment, and 25watt or less red light bulbs may be connected to Okie-Tex power outlets. Personal computers not attached to telescopes or CCD's or used for astronomical image processing, and appliances such as hot plates, coffee pots, fans, heaters and refrigerators are NOT to be connected to field electrical supplies. Medical devices, such as CPAP machines, are permissible.

If you use generators to recharge mobile battery packs please refrain from running the generators from dark until 11:00 AM. Generators will be allowed to run during the daytime hours only, but not before 11:00 AM. Anyone with a generator is asked to be aware of campers nearby and to store your generator out of site. We don't want to have the noise distraction from these running all of the time.

### Music

Everyone has their favorite observing music that contributes to the star party experience but please respect your fellow observers! Music that can be heard across the observing field will not be allowed. If your neighbor doesn't like your taste in music then turn it down a few decibels or plug in some headphones. A good rule of thumb would be: If your music can be heard more than 10 feet away it's probably too loud!

### Alcoholic Beverages

Camp Billy Joe is a Christian Youth Camp and the owners prefer that drinking not take place during the Okie-Tex Star Party. If you should bring liquor to our star party, under no circumstances should it be brought into the Dining Hall, Tent, Cosmic Cafe, Bath Houses, etc. Please keep it in your own personal area and out of sight!! Drunken behavior will not be tolerated!

### Pets

Pets must be on a leash at all times. If your pet is aggressive or prone to barking please leave it at home. Pets are not allowed in any of the buildings. Pets will not be allowed on the observing field while lighting restrictions are in effect. You may walk your pet during daylight hours but please clean up after it!

### Tents, Camping Trailers And Canopies

If you are camping please do not set up your tent or camping trailer on the observing field or in traffic ways. This includes canopies, pavilions and similar structures designed to provide shade. Please make sure that your tent is firmly staked down and the guy lines do not extend into the observing area for the safety of other star party participants. Please respect your neighbor's view of the horizon.

RV hookups are not provided at the Okie-Tex Star Party site at this time. RV's and camping trailers are NOT to be powered by star party electricity outlets. Black Mesa State Park (approx. 5 miles from the site) provides full RV hookups if you require them.

### Internet Use

Okie-Tex provides wireless internet service for most of the observing fields and dining hall free of charge. There are also desktops in the tent. This is a **single LTE** connection, please do not use it to transmit or download large files, play online games, etc. Also, please disable your "Automatic Update" feature during the star party. Due to a wide number of variables, connection to the internet is not guaranteed. This is an unsecured network! There is no encryption, antivirus protection or firewall on this network! Please make sure your computer is adequately protected prior to connecting with both a firewall and antivirus software. The Okie-Tex Star Party is in no way responsible for any damage or loss of data for any cause resulting from your connection to this network. Your use of this network indicates that you understand and agree with this condition. **If you are using an iPhone, Blackberry, etc., hand held type device to access the WiFi it is very important that you keep it turned off when not in use. If left on, It will hold a connection to the network and WiFi causing everyone to lose internet access due to congestion. Also, please keep your WiFi/Bluetooth connection disabled on your laptop when you are not on the internet, for the same reason. Please adhere to this policy so that everyone can share internet access while they are here. Do not operate any other personal wireless system that interferes with the OkieNet. Some of the wireless mount and scope controllers operate at the exact same frequency as the WiFi, so please be aware in case we have interference from them, and turn it off.**

### Laser Pointers

The use of laser pointers is banned. Serious and permanent eye damage can result, and you can ruin an imager's work, so cloudy or clear, just keep them put away. Groups may use a laser pointer for educational purposes with advance permission from the star party, but no later than 9:30 PM.

### Mesa Climbing

The Mesas on the East and South are yours to scale, at your own risk. The Mesa on the West is on private property and the owners have asked us not to trespass. **Under no circumstances, is anyone allowed access to the Mesas after dark.**

### Meal Time

Meal time is a great time to sit and visit with new and old friends, alike. After you have eaten, please do not remain at the dining tables visiting. This will allow everyone to be able to find a place to sit and eat, also. This is also true in the Cosmic Cafe. Thanks for your kindness.

### Cooking Fires

Due to the local "Burn Ban" and possible damage to optical coatings, no smoky type open camp or charcoal cooking fires are allowed. Coleman type stoves are OK.